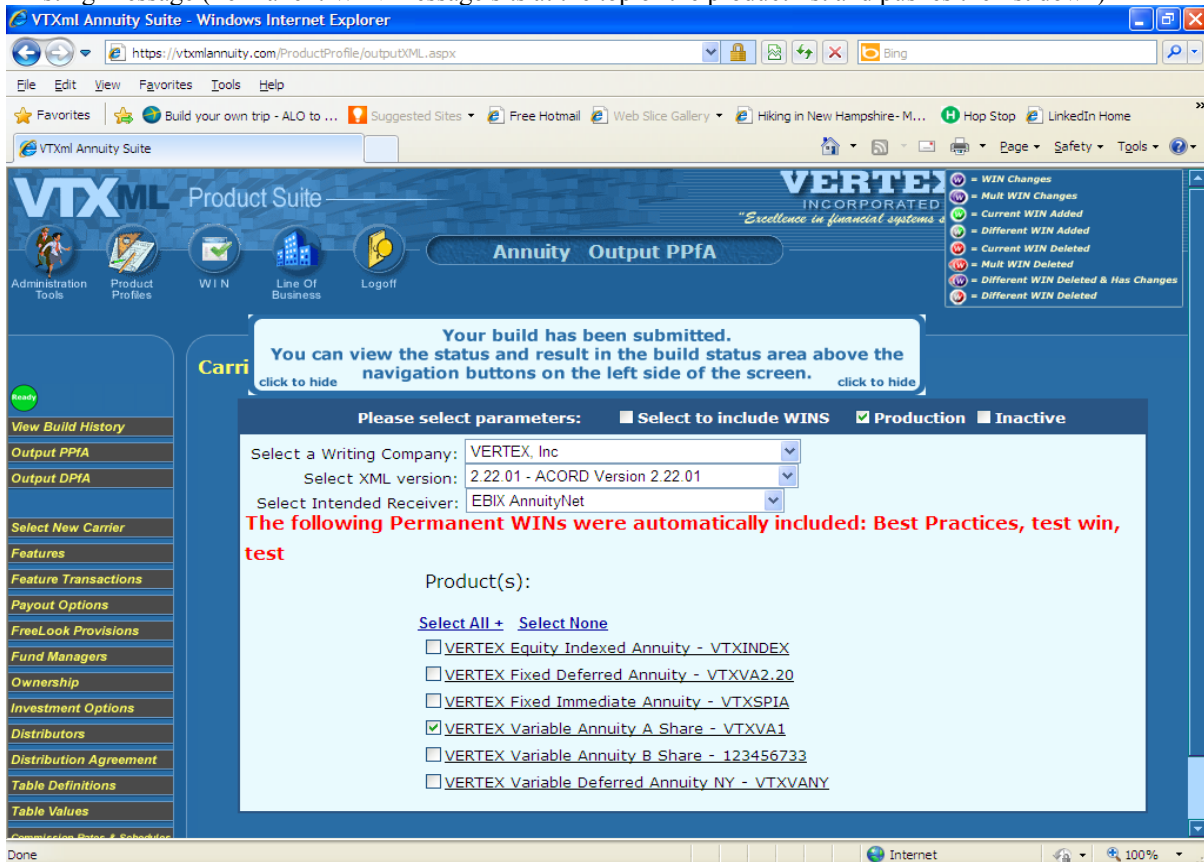
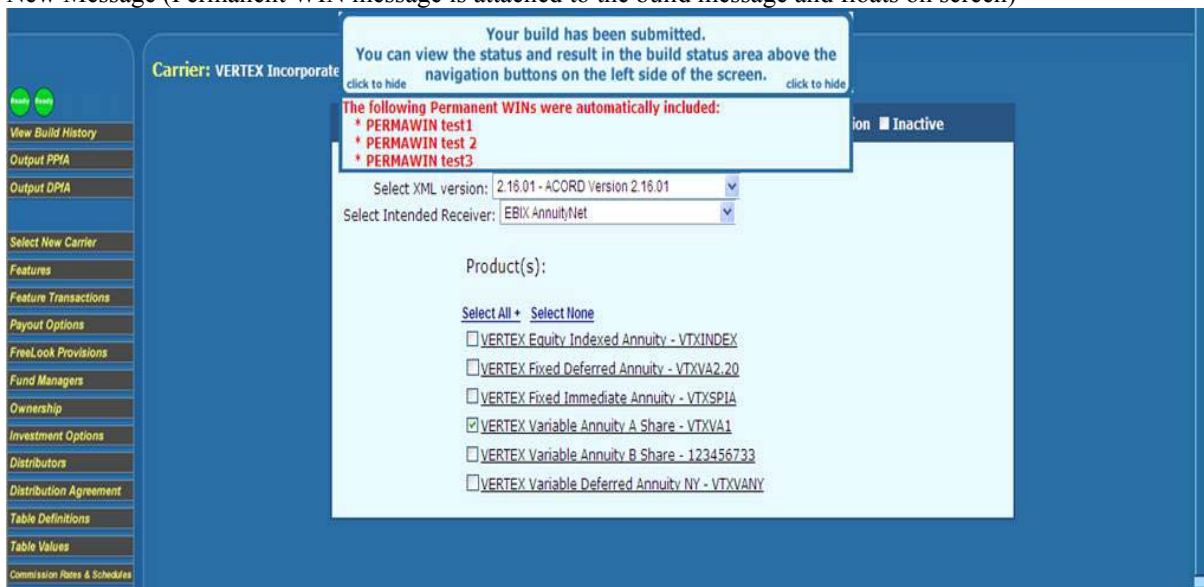


# Permanent WIN Message Location Change

Existing Message (Permanent WIN Message sits at the top of the product list and pushes the list down)



New Message (Permanent WIN message is attached to the build message and floats on screen)



\*\*\* Remember, you can click on the "Your build has been submitted...." message to clear it from the screen if you are doing multiple builds in a row and need to change parameters.